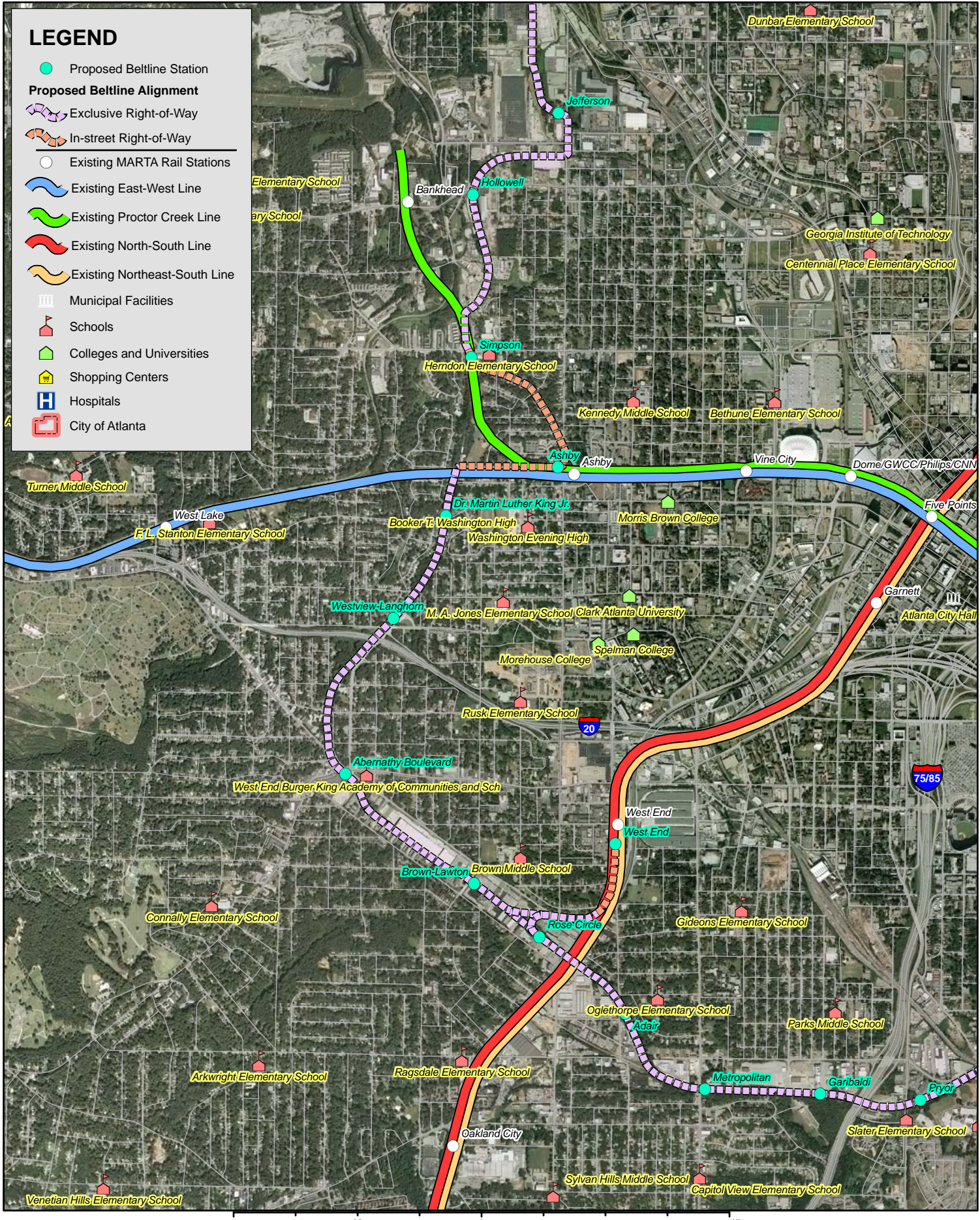


LEGEND

- Proposed Beltline Station
- Proposed Beltline Alignment**
- Exclusive Right-of-Way
- In-street Right-of-Way

- Existing MARTA Rail Stations
- Existing East-West Line
- Existing Proctor Creek Line
- Existing North-South Line
- Existing Northeast-South Line
- Municipal Facilities
- Schools
- Colleges and Universities
- Shopping Centers
- Hospitals
- City of Atlanta



**Proposed Beltline Alignment and Stations
Southwest Segment**
January 2007

